



Statewide Bicycle and Pedestrian Transportation Plan and Map Update

Steering Committee Meeting #3

ConnDOT Room G300
September 23, 2008



Progress to Date

- Previous Steering Committee meetings
 - April 2008
 - June 2008



Meeting Purpose

- Provide information on key tasks
 - Goals / action strategies
 - Benchmarking review
 - Bike Map
 - Crash data
 - Funding review
 - Public and stakeholder outreach
- Gain input on moving forward on tasks



Key Tasks

Goals/Action Strategies



Connecticut Department of Transportation

- Review and provide final comments
- Revised based on SC and ConnDOT input
- No changes to vision



Connecticut Department of Transportation

Benchmarking Review

Assess bicycle and pedestrian planning efforts in other states

- Three state-of-the-art states
- Four neighboring states
- Large and small states, geographically dispersed
- Questionnaire
- Interview



Benchmarking Review

Status:

- Questionnaires and interviews complete
- Technical memorandum available
- Comparison to ConnDOT



Connecticut Department of Transportation

Benchmarking Review

Summary of Findings:

- General policy vs. “Complete Streets” (MA Highway Design Manual)
- Limited inter-agency policy (no connection to health, safety, energy, etc.)
- Number of full-time staff, connection to SR2S
- Dedicated funding sources in NJ & OR
- Enhancements Projects provided the vast majority of bicycle and pedestrian funding
- Maps available from almost all states, some regional vs. statewide



Bicycle Map Update

- Subcommittee meetings and comments
- Draft suitability analysis



Suitability Index

- Suitability based on:
 - Average Daily Traffic (ADT)
 - Width of Shoulder
- Index
 - Most suitable
 - More suitable
 - Suitable
 - Less suitable
 - Not suitable



Suitability Index

- Potential Issues
 - Left side versus right side
 - Does not account for:
 - Truck traffic
 - # of lanes
 - Speed



Suitability Index



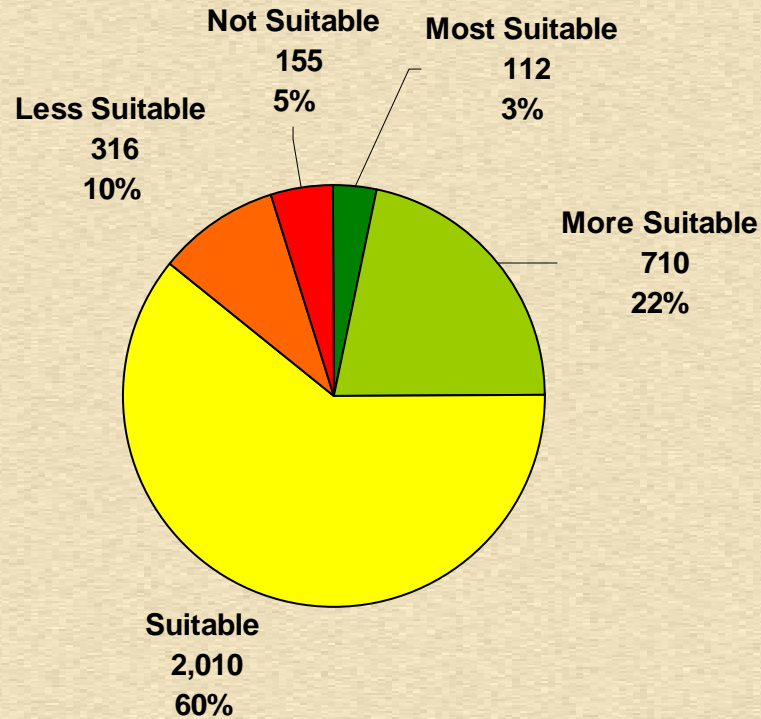
Connecticut Department of Transportation

	No Shoulder	<2'	2' – 4'	4' – 8'	>8'
10, 000	Not Suitable	Not Suitable	Suitable	Suitable	Most Suitable
2,000 – 10,000	Less Suitable	Less Suitable	Suitable	More Suitable	Most Suitable
<2,000	Suitable	More Suitable	More Suitable	More Suitable	Most Suitable

State Road Analysis



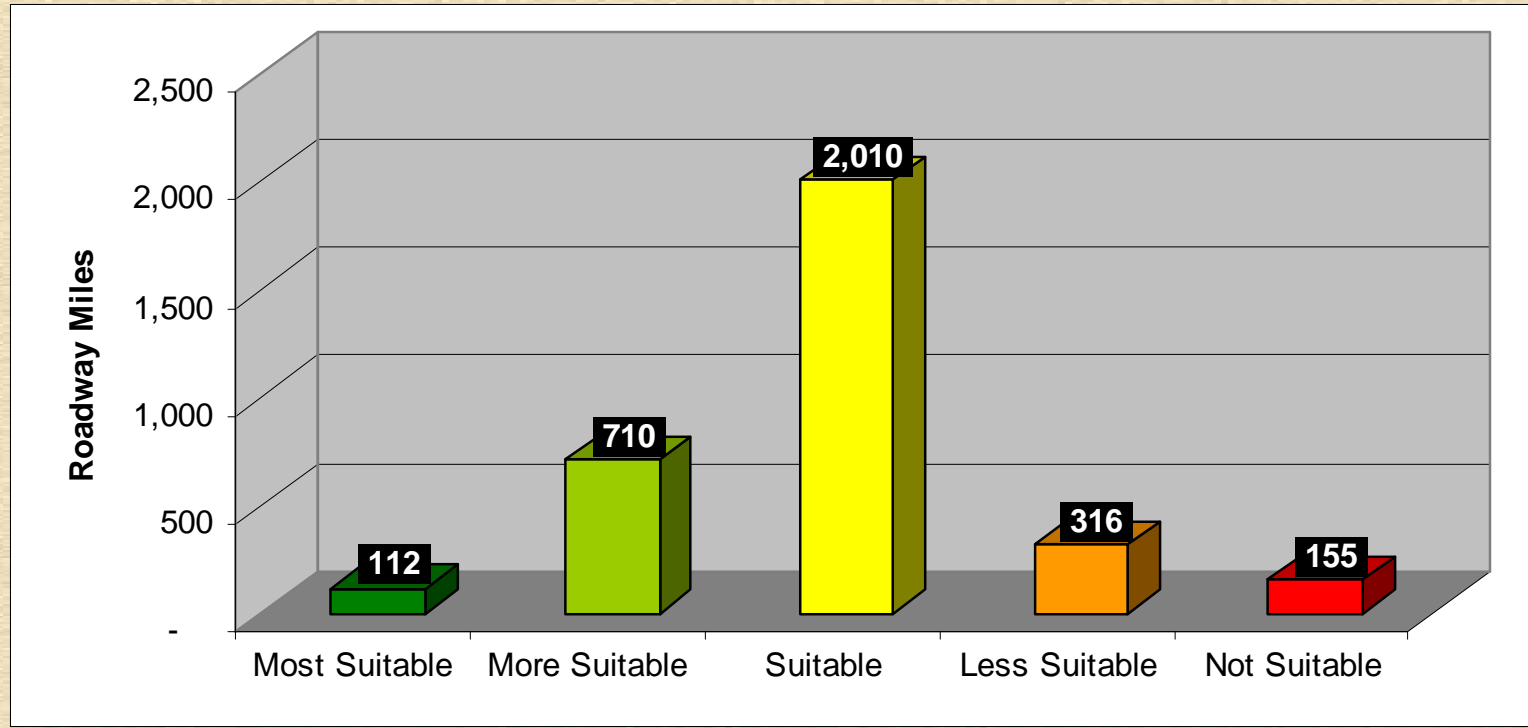
Connecticut Department of Transportation



State Road Analysis



Connecticut Department of Transportation





Suitability Map



Connecticut Department of Transportation





Ground Testing



Connecticut Department of Transportation

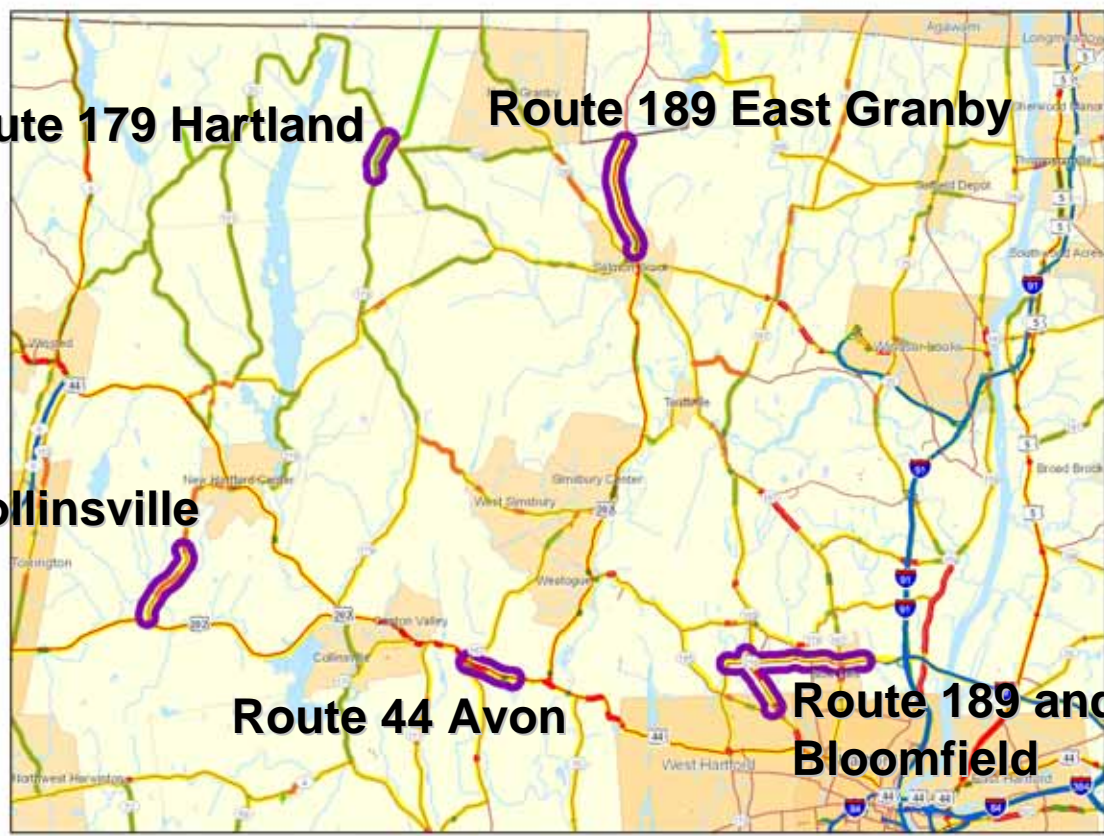
Route 179 Hartland

Route 189 East Granby

Route 219 Collinsville

Route 44 Avon

**Route 189 and 218
Bloomfield**

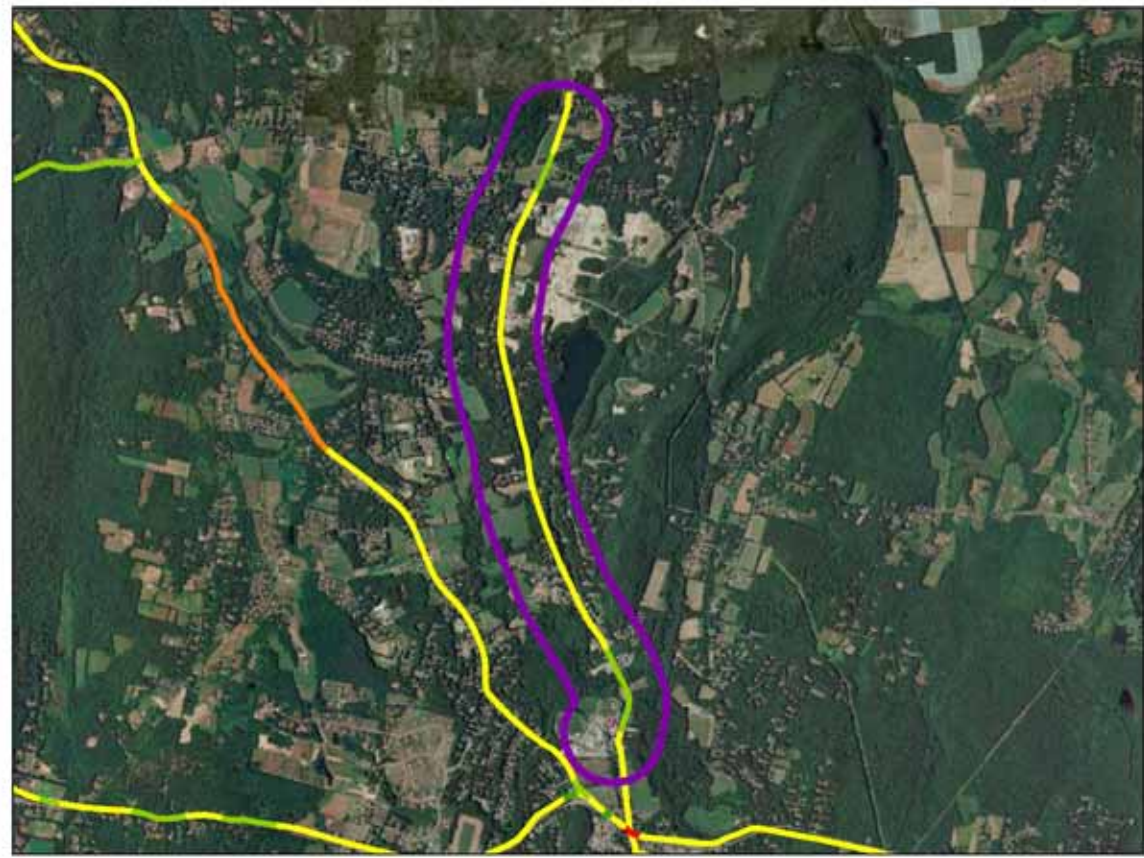




Route 189 East Granby



Connecticut Department of Transportation

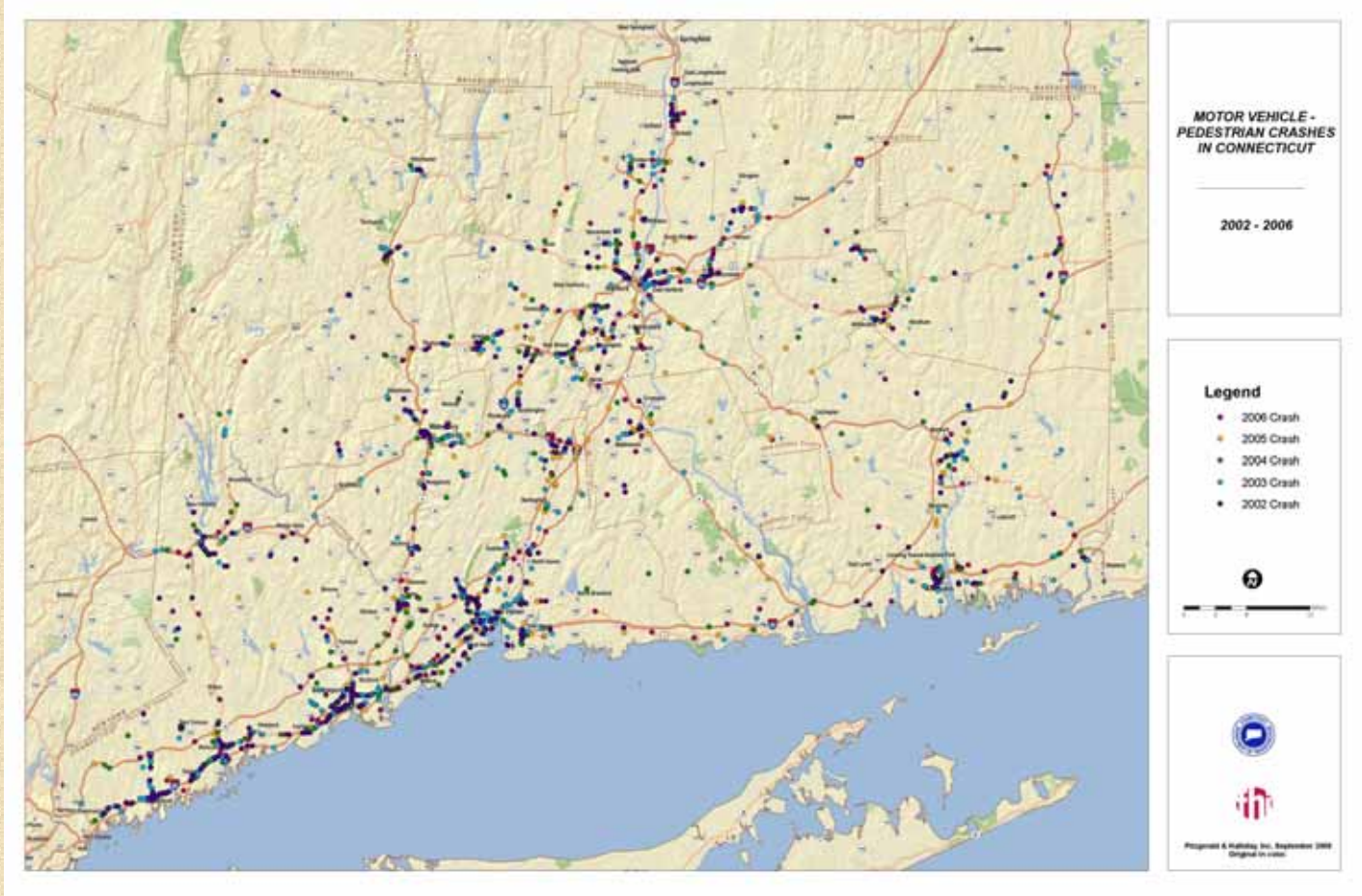




Crash Summary



Connecticut Department of Transportation

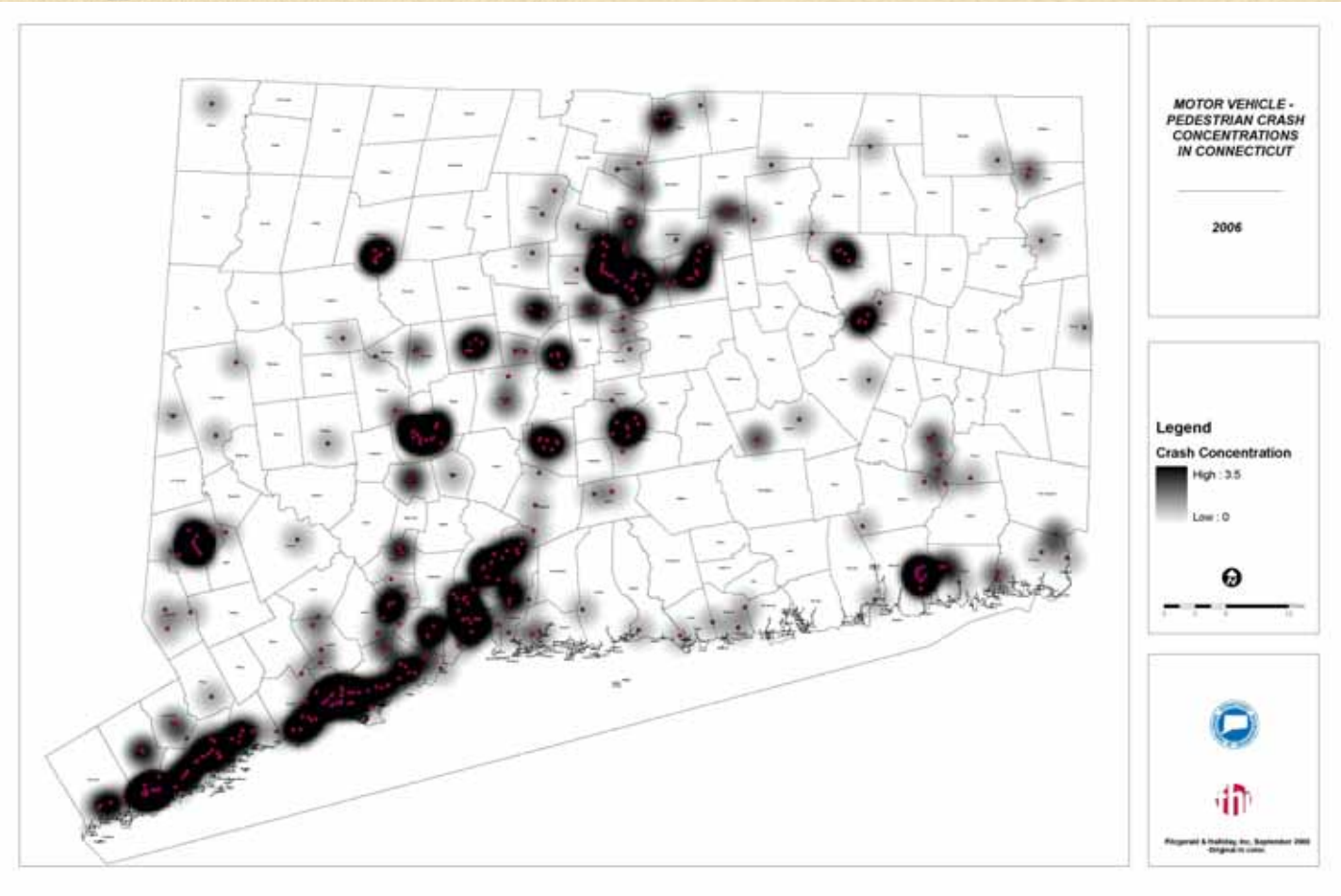




Crash Summary



Connecticut Department of Transportation





Funding Review

- 2007-2010 STIP:
 - Total funding = \$1.9 billion (highway portion only)
 - Bike/pedestrian funding = \$61.2 million (3.2 percent of total)

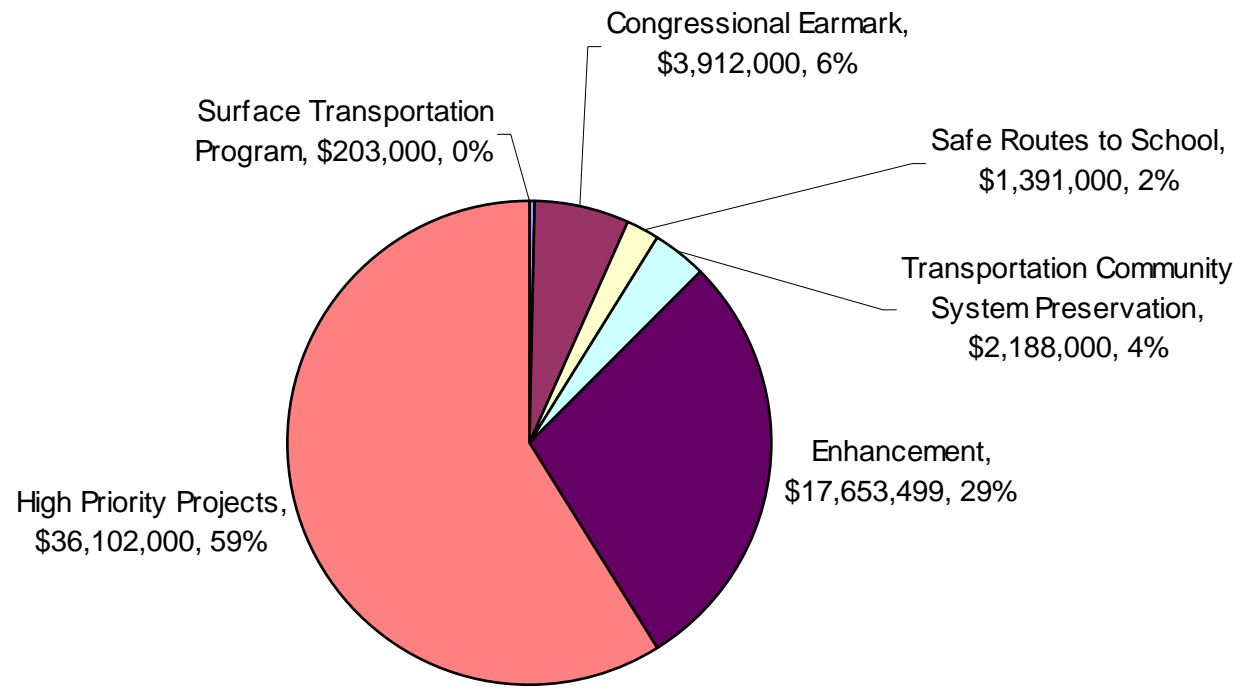


Connecticut Department of Transportation



Funding Review

Bicycle and Pedestrian Allocation by Funding Source - 2007-2010 STIP





Funding Review



Connecticut Department of Transportation

Town	Project	Phase	Year	Federal Funding Source	Total Funding	Federal Funding	State Funding	Local Funding
Shelton	Construct Housatonic Riverwalk Trail	Right-of-Way	2008	High Priority Projects	15,000	12,000	-	3,000
Berlin	Berlin railroad station enhancement of site and facility	Preliminary Engineering	2007	STPT	220,000	176,000	-	44,000
Vernon	Talcottville enhancements	Construction	2009	Transportation Community System Preservation	400,000	400,000	-	-
Bethel	Pedestrian safety improvements to Whittlesey Rd, Maple Ave, and Plumtrees Rd	Preliminary Engineering	2008	Safe Routes to School	25,000	25,000	-	-
Suffield	Widen sidewalk on bridge at CT 190 over Connecticut River to create bicycle/pedestrian path	Construction	2007	112	742,500	742,500	-	-
West Hartford	Trout Brook multiuse trail from New Park Ave to Quaker La South	Construction	2008	STPH	253,600	203,000	50,600	-



Outreach

- 2nd newsletter complete
- Email distribution
- On project website at:
<http://ctbikepedplan.org/html-project-lib/documents.html>.
- Hard copies available



Outreach

- Targeted stakeholder meetings:
 - FVTC
 - CT Greenways
 - CCBA
 - Elm City Cycling



Outreach

Public outreach meetings:

- Two sets of four meetings at various locations statewide
- 1st set of meetings in October 2008

10/1 - Bristol Public Library

10/2 - Eastern CT State University Library

10/6 - New Haven Public Library

10/7 - Stamford Government Center



Outreach

Public outreach meeting format:

- 5:30 – 8:30 PM (Stamford) & 5:30 – 7:30 PM (others)
- Open house format
- Interactive period
- Brief presentation(s)
- Question and answer

Conclusion



Connecticut Department of Transportation

- Comments
- Next meeting – early December 2008